

A large, black, professional-grade document scanner is shown from a low angle. A document with various charts and graphs is being scanned. The scanner has a blue light guide on the top surface. The ScanSnap logo is visible in the top left corner.

ScanSnap

ScanSnap iX500

- The scanner that intuitively guides you through every step of the scanning process
- Access your documents anywhere and anytime
 - Scan to and view across a range of popular cloud services
 - Wirelessly scan to your PC, Mac, iPad® / iPhone®, Android™ and Kindle™ devices
- A host of automated settings designed for effortless scanning
- Scan your everyday documents from business cards to A4 and even A3
- Scan to: Word, Excel®, E-mail and SharePoint® amongst others
- ScanSnap Cloud takes paper directly to your cloud

ScanSnap
iX500



iOS



shaping tomorrow with you

FUJITSU

ScanSnap iX500

**Easily
digitises
various
document
types**



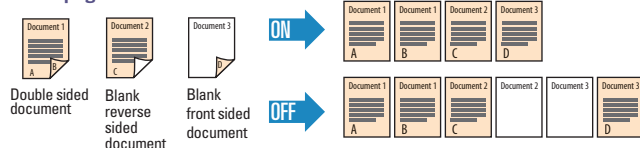
**“Total support” from digitisation
through to application**

Simple, Speedy & Compact!

Easily digitises paper based data with the touch of one button

The iX500 facilitates simple PDF generation with the following one touch activated automatic settings and automatic image correction functions:

Blank page detection



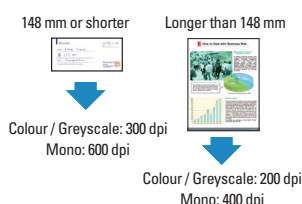
Auto deskew and auto orientation



Auto-size detection



Automatic resolution function



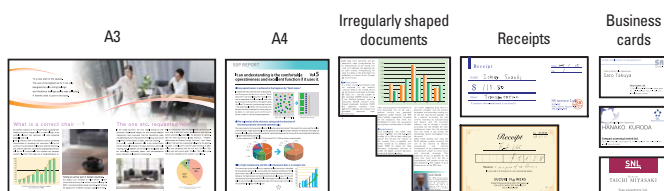
Intelligent auto colour detection



Speedy

Just place a document in the scanner's paper chute, press the “scan” button, and the iX500 starts scanning right away. Furthermore, the iX500 is able to scan up to 50 two-sided pages at a speedy 25 pages per minute.

Scans everything from business cards to A3 sized documents



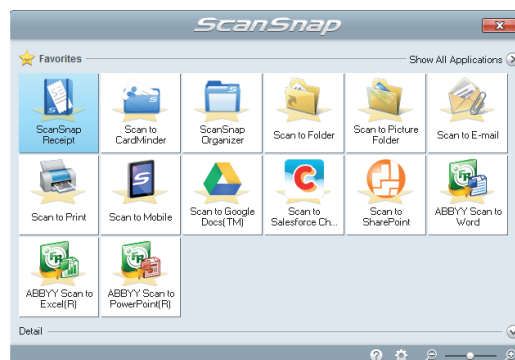
ScanSnap Carrier Sheets

Use of a carrier sheet enables iX500 users to digitise larger documents (A3/B4), as well as magazine and newspaper clippings and photographs. Such documents inserted into a carrier sheet can be scanned successively or mixed in with regular paper documents.

Intuitive “Quick Menu” for intelligent and flexible operation

The Quick Menu can be set up to display your ‘Favourite’ scanning destinations or will ‘Recommend’ an application; eg. Scan a business card, which will then be automatically recognised and a list of business card related applications will be recommended.

Quick Menu for Windows® OS*



*Quick Menu for Mac OS features other applications

Generates editable PDF files

- Comes with Nuance PowerPDF, which enables users to move beyond merely “seeing” and “printing” generated data, to editing generated PDF files however they like
- Generates password and digital ID attached PDF files that are ideal for safeguarding personal information and other confidential information that needs to be protected
- Create editable Microsoft® Word / Excel® / PowerPoint® files using ABBYY FineReader for ScanSnap™

Efficiently organises business card information

- Scans large volumes of business cards into digital business card holders
- Enables users to enter scanned data into Excel®, Outlook, Salesforce and other databases for future reference

Bundled

Business card scanning software

CardMinder™

Document received



Document scanned



Now make your paper productive

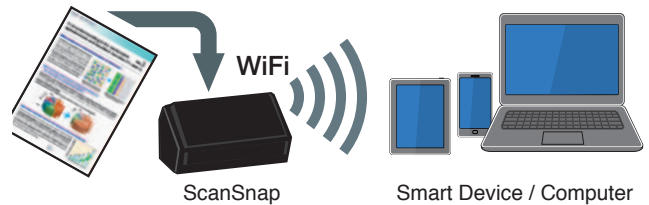


ScanSnap Receipt

- Organise receipts: Manage all of your receipts in one place
- Extract information: Easily extract data from receipts
- Efficient tax and expense filing: Export in CSV format



Scan via WiFi to your devices



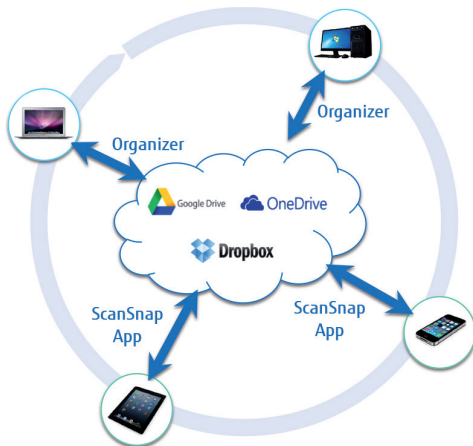
The iX500 now offers the unique ability to link directly with your PC, Mac, iPad®, iPhone®, Android™ and Kindle™ devices via a WiFi connection.

Fitted with a GI processing engine the iX500 means that users can now wirelessly operate the scanner via their Smart Device and the ScanSnap Connect Application* creating high quality scanned images that can be saved to the smart device, edited, retrieved at a later date and distributed.

* ScanSnap Connect Application is available as a free download from the official application distribution service of the smart device (Google Play, Apple App Store and Amazon App Store).

ScanSnap Sync

ScanSnap Sync easily synchronises multiple devices: Scanned data will be synced automatically through your chosen cloud service.



Enhanced scanning environment centred around a new "GI" image processing engine



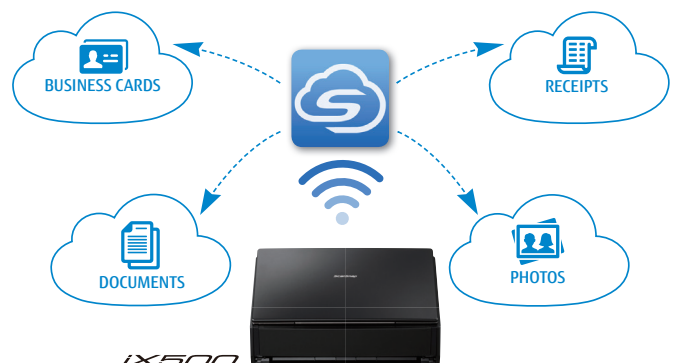
The iX500 comes with an inbuilt dual core CPU that takes ScanSnap to that next performance level

- Scan wirelessly to a PC or Mac as well as to a smart device
- Enhanced scanning speeds independent of target device and connectivity
- Offers a paper feeding performance that you would expect with a high speed, high volume device, enhanced through USB 3.0 support

ScanSnap Cloud

Takes paper directly to your cloud

Are you a regular user of cloud services like Dropbox, Google Drive, Evernote or similar? The ScanSnap Cloud is the go-to solution for your documents, business cards, receipts and photos. Simply scan and ScanSnap Cloud will identify the type of content and route it to your preferred cloud service. No PC required.



ScanSnap iX500 Specifications



Model		ScanSnap iX500	
Supported operating systems		Supports Windows and Mac OS, see http://scansnap.fujitsu.com/g-support/en for further information	
Scanner type		ADF (automatic document feeder)	
Scanning modes		Simplex / Duplex scanning, Colour / Greyscale / Mono / Automatic (colour / greyscale / mono detection) ^{*3}	
Image sensor		CIS (contact image sensor) x2	
Light source		3 Colour LED (red / green / blue)	
Scanning speed^{*1} (A4 Portrait)	Auto mode ^{*2}	Simplex: 25 ppm, Duplex: 50 ipm	
	Normal mode	Simplex (colour / greyscale 150 dpi) (mono 300 dpi): 25 ppm, Duplex (colour / greyscale 150 dpi) (mono 300 dpi): 50 ipm	
	Better mode	Simplex (colour / greyscale 200 dpi) (mono 400 dpi): 25 ppm, Duplex (colour / greyscale 200 dpi) (mono 400 dpi): 50 ipm	
	Best mode	Simplex (colour / greyscale 300 dpi) (mono 600 dpi): 25 ppm, Duplex (colour / greyscale 300 dpi) (mono 600 dpi): 50 ipm	
	Excellent mode ^{*3}	Simplex (colour / greyscale 600 dpi) (mono 1,200 dpi): 7 ppm, Duplex (colour / greyscale 600 dpi) (mono 1,200 dpi): 14 ipm	
Document size	Normal mode without carrier sheet	A4, A5, A6, B5, B6, business card, postcard, letter, legal and custom sizes Minimum : 50.8 x 50.8 mm / Maximum : 216 x 360 mm / Automatically recognises document size	
	Normal mode with carrier sheet ^{*3}	Use of a carrier sheet permits the scanning of A3, B4, double letter and photographs as well as the document sizes that are listed above	
	Long paper scanning ^{*4}	863 mm in length	
Recommended paper weight		40 to 209 g/m ² / A8 size: 127 to 209 g/m ² Cards can be scanned (portrait / landscape), non-embossed : 0.76 mm or less / embossed (ISO7810 conforming)	
Paper chute capacity^{*5}		50 sheets (A4: 80 g/m ²)	
Interface^{*6}		USB 3.0 (USB 2.0, USB 1.1 Supported)	
WiFi interface^{*7}	Observed standards	IEEE802.11b / IEEE802.11g / IEEE802.11n	
	Communication mode	Infrastructure mode	
	Frequency ^{*8}	2.412 GHz to 2.462 GHz / 2.412 GHz to 2.472 GHz	
	Communication distance	Indoors, 50 m (recommended: indoors, within 25 m) May vary depending on the surrounding environment and the access point to be connected	
	Security ^{*9}	WPA-PSK (TKIP/AES/AUTO), WPA2-PSK (AES), WPA-PSK, WPA2-PSK (AES/AUTO), WPA (TKIP/AES/AUTO), WPA2 (AES), WPA, WPA2 (AES/AUTO), SharedKey (WEP 64-bit/128-bit), 802.1X (WEP 64-bit/128-bit)	
Power requirements		WPS2.0 supported (button / PIN code)	
Power consumption	USB connection	AC 100 to 240V, 50 / 60Hz	
	WiFi connection	Operating: 20W or less (Sleep mode: 1.6W or less) Auto Standby (OFF) mode: 0.4W or less Operating: 20W or less (Sleep mode: 2.5W or less) Auto Standby (OFF) mode: 0.4W or less	
Operating environment		Temperature: 5 to 35 °C / Relative humidity: 20 to 80 % (Non-condensing)	
Dimensions (W x D x H)^{*10} / Weight		292 x 159 x 168 mm / 3kg	
Environmental compliance		ENERGY STAR [®] / RoHS ^{*11} / Ecodesign ^{*12}	
Driver		Specific driver (Does not support TWAIN / ISIS [™])	
Other		Double-feed detection Ultrasonic double-feed detection sensor	

- ^{*1} Scanning speeds may vary due to the system environment used
- ^{*2} Documents measuring approximately 148 mm in length or less are scanned in "Best mode", while other documents are scanned in "Better mode"
- ^{*3} Only computer connection
- ^{*4} The iX500 is capable of scanning documents that exceed A4 size in length. This function is available for all modes except Excellent mode
- ^{*5} Maximum capacity varies, depending upon paper weight
- ^{*6} Some computers may not recognise the iX500 when it is connected to a USB 3.0 port. In this case, please use a USB 2.0 port
- ^{*7} Only Android[™] / iOS in case of WiFi connection
- ^{*8} Values depends on country
- ^{*9} IEEE802.1X Authentication is not supported
- ^{*10} Excluding the stacker and other external attachments
- ^{*11} PFU LIMITED, a Fujitsu company, has determined that this product meets RoHS requirements (2011/65/EU)
- ^{*12} PFU LIMITED, a Fujitsu company, has determined that this product meets Ecodesign Directive requirements (2009/125/EC)
- ^{*13} The software is available to be downloaded from the ScanSnap website <http://scansnap.fujitsu.com/g-support/en/>
- ^{*14} Available via an online update

	Purpose	Software	iOS	Android	PC Compatible	MAC Compatible
Software	Scanner driver	ScanSnap Manager			✓	✓
	File management	ScanSnap Organizer (ScanSnap Sync ^{*14})			✓	✓
	Business card management	CardMinder [™]			✓	✓
	PDF editing	Nuance PowerPDF			✓	✓
	Text recognition	ABBYY FineReader for ScanSnap [™]			✓	✓
	ECM linkage software	Scan to Microsoft [®] SharePoint ^{*13}			✓	✓
	Receipt Management	ScanSnap Receipt ^{*14}			✓	✓
	Sync to your devices	ScanSnap Connect App (ScanSnap Sync ^{*14})	✓	✓	✓	✓
	Cloud	Evernote, Dropbox ^{*13} ScanSnap Cloud	✓	✓	✓	✓



Consumables and options	Part number	Remarks
Consumable kit	CON-3656-001A	1 x pick roller; 1 x brake roller; total maximum lifetime 200,000 documents or 1 year
Cleaning kit	SC-CLE-SS	24 cleaning fluid impregnated wipes
Carrier sheets	PA03360-0013	5 carrier sheets
ScanSnap bag	PA03951-0651	Intended for ScanSnap iX500, S1500, S1500M, S510, S510M, S500, S500M



All names, manufacturer names, brand and product designations are subject to special trademark rights and are manufacturer's trademarks and/or registered brands of their respective owners. All indications are non-binding. Technical data is subject to change without prior notification. Product specifications are subject to change without prior notice due to product modification.

Apple iPad, iPhone, iPod touch and iTunes are trademarks of Apple Inc., registered in the U.S. and other countries. App Store is a service mark of Apple Inc.

PFU (EMEA) Limited
Hayes Park Central
Hayes End Road, Hayes
Middlesex UB4 8FE
United Kingdom
Tel: +44 (0)20 8573 4444

PFU (EMEA) Limited
Frankfurter Ring 211
80807 Munich
Germany
Tel: +49 (0)89 32378 0

PFU (EMEA) Limited
Viale Monza, 259
20126 Milano (MI)
Italy
Tel: +39 02 26294 1

PFU (EMEA) Limited
Camino Cerro de los Gamos, 1
28224 Pozuelo de Alarcón
Madrid
Spain
Tel: +34 91 784 90 00

www.ScanSnapit.com

