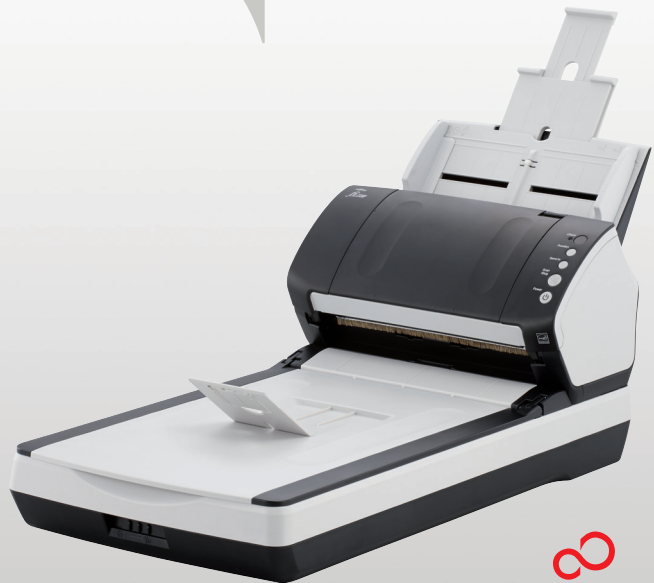


# Deliver exceptional business results

Progress to the next level

## FUJITSU Image Scanners fi-7140 and fi-7240

- **Efficient.** Scan diverse paper documents supported by class leading technology
- **Automatic.** From analogue to digital can be as simple as pressing the user panel buttons
- **Compact.** Desktop and countertop placement allow for immediate document capture and transaction
- **Intuitive.** PaperStream Capture and PaperStream IP for high performance scanning of multiple documents at the same time and image clean up



shaping tomorrow with you

**FUJITSU**

Outstanding performance starts with reliable, compact hardware technology automatically supported by intuitive routines



The sleek and compact fi-7140 and fi-7240 desktop scanners from Fujitsu allow for merging paper document content with digitally born data.

- Enjoy the introduction of optimum quality from automated document capture
- Increase breadth of document management related activities such as invoice and forms processing, archiving and workflow
- Flexibly fit this document capture solution to existing and emerging tasks such as current mail delivery methods or addressing regulatory concerns



### Designed to fit – document capture starts with these reliable scanning solutions

The fi-7140 and fi-7240 are designed to introduce seamless document capture routines to organisations and expand them into workgroups and departments. Easy set up, intuitive use and hassle-free maintenance with replaceable consumables and unhindered cleaning routines characterise these robust scanners. They inherit the latest fi Series hardware technology and PaperStream software.

### Set to fit – trigger organisational routines

Define information handling routines and mimic paper based processes with PaperStream Capture. Then associate these routines with the intuitive user panel on the scanner's front and trigger them instantly whenever sets of relevant documents need to be captured.

### Management from a single location

Scanner Central Admin software enable Fujitsu scanners to be managed and maintained from a single location to minimise scanner downtime anywhere on the global system.

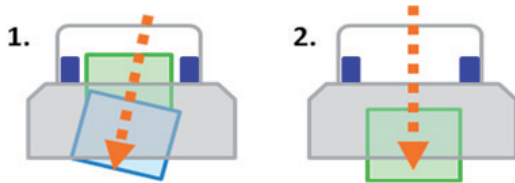


fi-7140 / fi-7240 – A4 Portrait at 300 dpi 40 ppm / 80 ipm  
Scan mixed batches through the 80 sheet ADF

## Enhanced mixed document batch operation and continuous uninterrupted scanning

Outstanding paper feeding is at the core of these scanners and they are able to scan mixed batches with thicknesses from 27 to 413g/m<sup>2</sup>. To help protect the original document, a paper protection function monitors document movement and automatically stops feeding when any irregularities are detected.

For mixed batch scanning where documents of different sizes, shapes, surface characteristics and paper thicknesses are grouped and processed together, the “skew reducer” roller mechanism supports feeding physically skewed documents within the batch, minimising the skew effect this document might else force on subsequent sheets. This ensures that each document is captured with the utmost precision and simplicity and ensures any documents are not crumpled or damaged.



1. Independent pick rollers ensure a skewed document will not affect the alignment of following sheets

Both scanner models additionally feature an ultrasonic sensor that accurately detects multiple paper layers where two or more sheets are fed through the scanner at once. The Intelligent Multifeed Function allows document scan parameters to be applied which enable the sensors to be set up to help identify and subsequently ignore purposely placed attachments such as sticky notes or items with a photo attached that would otherwise cause disruptions to the scanning process.

## Integrated flatbed for even greater scanning potential

The fi-7240 model features an ultra fast built-in flatbed module that enables the scanning of diverse documents types such as those that may be bound, stapled or delicate.

### Optional extras



#### Post Imprinter for fi-7140

The optional imprinter unit prints identification markers like dates, alphanumeric codes and symbols on the reverse side of the original document.

{Part Number – PA03670-D201}



#### Black Document Pad for fi-7240

This enables the fi-7240 to apply automatic cropping to a scanned document on the flatbed.

{Part Number – PA03670-D801}



#### Carrier sheets

Carrier sheets allow you to scan documents, larger than A4 or photos and clippings that are at risk of being damaged when processed through an ADF.

{Part Number – PA03360-0013}



## Fujitsu developed best in class scanner driver and image capturing / processing software



### PaperStream IP – high quality image enhancement

PaperStream IP is the scanner driver for the fi-7140 and fi-7240 scanners. In addition to being fully compliant with the industry standard TWAIN and ISIS interface, PaperStream IP incorporates as standard, highly sophisticated image processing that automatically applies features such as noise removal, background pattern removal and character augmentation to produce exceptionally clear, high quality images that are suitable for direct import into the users' workflow.

PaperStream IP has an intuitive, easy to use interface that can be switched between Administrator or User mode to simplify the scanning process and reduce user error.

Additionally PaperStream IP also introduces a new Assisted Scanning mode, which allows the user to visually select the best quality image from a range of images of the page, rather than needing to manually fine tune the scanning parameters one by one.



### PaperStream Capture – enhanced capture

PaperStream Capture is an easy to use capture tool which allows users to easily create scanning routines which encapsulate all of the settings and configuration required to control the scanning process from scan to the release of the image to the users' or companies' defined workflow.

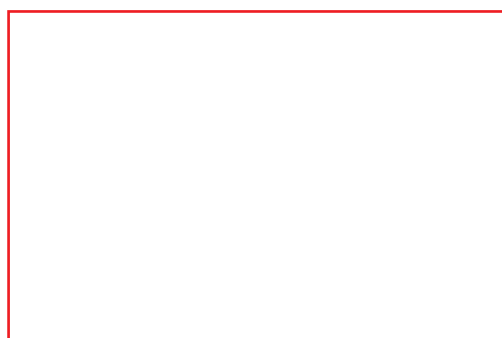
Once created, profiles can be run by a single click and the most frequently used profiles can even be linked to the fi-7140 and fi-7240 scanners front panel scan button to streamline the whole capture process.

## Specifications

Model	fi-7140	fi-7240
Supported operating systems	See <a href="http://emea.fujitsu.com/fiscannerfaqs/">http://emea.fujitsu.com/fiscannerfaqs/</a> for further information	
Scanner type	ADF	
Scanning modes	Simplex / Duplex, Colour / Greyscale / Mono	
Image sensor type	Colour CCD x 2	Colour CCD x 3
Light source	White LED Array x 2	White LED Array x 3
Document size	ADF	Minimum <sup>1</sup> : A8 Portrait (50.8 x 54 mm) / Maximum: Legal (216 x 355.6 mm)
	Flatbed	Long page scanning: 216 x 5,588 mm <sup>2</sup>
Recommended paper weight <sup>3</sup>	27 to 413 g/m <sup>2</sup> / supports 127 to 209 g/m <sup>2</sup> for A8 size ID card types (ADF): Portrait / Landscape, 1.4 mm thickness or less <sup>4</sup>	
Scanning speed (A4 Portrait) <sup>5</sup> Colour <sup>6</sup> / Greyscale <sup>6</sup> / Mono <sup>7</sup>	Simplex: 40 ppm, Duplex: 80 ipm (200, 300 dpi)	
	Flatbed	–
Paper chute capacity (A4 Landscape) <sup>8</sup>	80 sheets (A4: 80 g/m <sup>2</sup> )	
Background colours	White / Black (Selectable)	
Output resolution <sup>9</sup>	50 to 600 dpi (adjust by 1 dpi increments), 1200 dpi (driver) <sup>10</sup>	
Output format	Colour: 24 bit, Greyscale: 8 bit, Mono: 1 bit	
Interface / Connector shape	USB 2.0 / USB: B type	
Image processing functions	Multi image output, Automatic colour detection, Blank page detection, Dynamic threshold (iDTC), Advanced DTC, SDTC, Error diffusion, Halftone, De-Screen, Emphasis, Colour cleanup, Dropout colour (None / Red / Green / Blue / Saturation), sRGB output, Hole punch removal, Index tab cropping, Split image, De-skew, Edge correction, Vertical streaks reduction, Automatic page size detection	
Power requirements	AC 100 to 240 V, ±10%	
Power consumption	Operating: 36W or less (Sleep mode: 1.8W or less) Auto Standby (OFF) mode: 0.35W or less	Operating: 39W or less (Sleep mode: 1.8W or less) Auto Standby (OFF) mode: 0.35W or less
Operating environment	Temperature: 5 to 35°C, Relative humidity: 20 to 80% (Non-condensing)	
Dimensions (W x D x H base unit) <sup>11</sup> / Weight	300 x 170 x 163 mm / 4.2 kg	300 x 577 x 234 mm / 8.8 kg
Included software / drivers	PaperStream IP (TWAIN/TWAIN x64/ISIS), Software Operation Panel, Error Recovery Guide, PaperStream Capture, ScanSnap Manager for fi Series <sup>12</sup> , Scan to Microsoft SharePoint <sup>12</sup> , ABBYY FineReader for ScanSnap <sup>13</sup> , Scanner Central Admin Agent	
Environmental compliance	ENERGY STAR <sup>®</sup> / RoHS <sup>13</sup>	

- <sup>1</sup> The minimum scanning area only applies to using the ADF.
- <sup>2</sup> The fi-7140 and fi-7240 are capable of scanning documents that exceed A3 in length: Documents up to 5,588 mm in length can be scanned at resolutions up to 200 dpi.
- <sup>3</sup> The paper weight only applies to using the ADF.
- <sup>4</sup> Capable of scanning up to 3 cards at a time. (Note: does not support multi-embossed card feeding).
- <sup>5</sup> Actual scanning speeds are affected by data transmission and software processing times.
- <sup>6</sup> JPEG compressed figures.
- <sup>7</sup> TIFF G4 compressed figures.
- <sup>8</sup> Maximum capacity varies, depending upon paper weight.
- <sup>9</sup> Maximum output resolutions may vary, depending upon the size of the area being scanned and whether the scanner is scanning in simple or duplex.
- <sup>10</sup> Scanning limitations due to scanning mode, document size and available memory may occur when scanning at high resolutions (600 dpi or higher).
- <sup>11</sup> Excluding the ADF paper chute and stacker.
- <sup>12</sup> The software can be downloaded from the website designated in the Setup DVD-ROM.
- <sup>13</sup> PFU LIMITED, a Fujitsu company, has determined that this product meets RoHS requirements (2011/65/EU)

All names, manufacturer names, brand and product designations are subject to special trademark rights and are manufacturer's trademarks and/or registered brands of their respective owners. All indications are non-binding. Technical data is subject to change without prior notification.



**PFU (EMEA) Limited**  
Hayes Park Central  
Hayes End Road, Hayes  
Middlesex UB4 8FE  
United Kingdom  
Tel: +44 (0)20 8573 4444

**PFU (EMEA) Limited**  
Frankfurter Ring 211  
80807 Munich  
Germany  
Tel: +49 (0)89 32378 0

**PFU (EMEA) Limited**  
Viale Monza, 259  
20126 Milano (MI)  
Italy  
Tel: +39 02 26294 1

**PFU (EMEA) Limited**  
Camino Cerro de los Gamos, 1  
28224 Pozuelo de Alarcón  
Madrid  
Spain  
Tel: +34 91 784 90 00

<http://emea.fujitsu.com/scanners>

