

General Specifications

Product name	ScanSnap iX1500	
Scanner type	ADF (Automatic Document Feeder)/Manual Feed, Duplex	
Scanning color mode	Color, Grayscale, Monochrome, Automatic (Color/Grayscale/Monochrome ^{*1} detection)	
Image sensor	Color CIS x 2 (Front x 1, Back x 1)	
Light source	3 Color LED (Red/Green/Blue)	
Optical resolution	600 dpi	
Scanning speed ^{*2} (A4 portrait)	Auto mode (Default) ^{*3}	Simplex/Duplex: 30 ppm
	Normal mode	Simplex/Duplex: 30 ppm (Color/Grayscale: 150 dpi, Monochrome: 300 dpi)
	Better mode	Simplex/Duplex: 30 ppm (Color/Grayscale: 200 dpi, Monochrome: 400 dpi)
	Best mode	Simplex/Duplex: 30 ppm (Color/Grayscale: 300 dpi, Monochrome: 600 dpi)
	Excellent mode ^{*1}	Simplex/Duplex: 8 ppm (Color/Grayscale: 600 dpi, Monochrome: 1,200 dpi)
Document size	Normal scan	Minimum: 50.8 x 50.8 mm (2 x 2 in.) Maximum: 216 x 360 mm (8.5 x 14.17 in.)
	Manual scan	A3, B4, 279 x 432 mm (11 x 17 in.)
	Long paper scanning ^{*4}	3,000 mm (863 mm in 32-bit) Smart Device: 863 mm (Duplex), 1,726 mm (Simplex)
Paper weight (Thickness)	40 to 209 g/m² (11 to 56 lb) A8 size or less; 128 to 209 g/m² (34 to 56 lb) Cards: 0.76 mm or less (Compliant with the ISO7810 ID-1 type) (Includes embossed cards in landscape orientation)	
ADF capacity ^{*5}	50 sheets (A4, 80 g/m² or 20 lb)	
Interface	USB	USB 3.1 Gen1 / USB 3.0 / USB 2.0 / USB 1.1 (Connector Type: Type-B) ^{*6}
	Wi-Fi	IEEE802.11a/b/g/n/ac Frequency band: 2.4 GHz / 5 GHz ^{*7}
Wi-Fi Interface	Access Point Connect Mode (Infrastructure mode) ^{*8} Direct Connect Mode (Ad-hoc mode) ^{*9}	
LCD	4.3 in. color TFT touch screen	
Power requirement	AC 100 to 240 V, 50/60 Hz	
Power consumption	Operating	17 W or less
	Sleep mode (USB connected)	1.5 W or less
	Sleep mode (Wi-Fi connected)	1.6 W or less
Operation environment	Temperature: 5 to 35 °C (41 to 95 °F) Relative humidity: 20 to 80% (Non-condensing)	
Dimensions (W x D x H) ^{*10}	292 x 161 x 152 mm (11.5 x 6.3 x 6.0 in.)	
Device weight	3.4 kg (7.5 lb)	
Environmental compliance	ENERGY STAR®/RoHS	
Multifeed detection	Overlap detection (Ultrasonic sensor), Length detection	
Driver	ScanSnap Home (ScanSnap specific driver) ●Windows: Does not support TWAIN/ISIS™ ●Mac OS: Does not support TWAIN	

^{*1} Available only when connecting to a computer. ^{*2} Scanning speeds may vary due to the system environment used. ^{*3} Scans will be made in "Best mode" if shorter sides are less than 105 mm and in "Better mode" if not. ^{*4} Available in all modes except for "Excellent mode" ^{*5} Maximum capacity varies, depending upon paper weight. ^{*6} Some computers do not recognize the ScanSnap when it is connected to a USB 3.1 Gen1/3.0 port. In this case, please use a USB 2.0 port. ^{*7} Availability of 5 GHz Wi-Fi may vary depending on region. ^{*8} Access Point Connect Mode requires a Wi-Fi access point or router. ^{*9} 5 GHz Wi-Fi is not available with Direct Connect Mode. ^{*10} Excluding the stacker and other external attachments.

Options

Description	Part number	Remarks
ScanSnap Home Additional License (1 License)	PA43404-B043	1 additional license for ScanSnap Home
Carrier Sheet ^{*1}	PA03360-0013	Contains 5 sheets supporting photographs and various document sizes For ScanSnap iX1500, iX500, iX100, S1100i
Photo Carrier Sheet	PA03770-0015	Contains 5 sheets supporting photographs (E-size, L-size, King-size), postcards, and business cards
ScanSnap Bag	PA03951-0651	Stores the ScanSnap iX1500/iX500 and accessories

^{*1} Although ScanSnap Carrier Sheets have a listed lifespan of 500 scans, the lifespan may vary with usage. ScanSnap Carrier sheets are intended to scan paper documents with weights of 127 g/m² or less. They also support the scanning of folded documents that are as large as 216 x 297 mm.

Consumables

Description	Part number	Remarks
Roller Set	PA03656-0001	Lifetime: Every 200,000 sheets or one year ^{*1} (For ScanSnap iX1500 or iX500)
Cleaner F1	PA03950-0352	100 ml bottle For use on the Brake roller and Pick roller
Cleaning Wipe	PA03950-0419	24 packets For use on the Brake roller and Pick roller
Cleaning Paper	CA99501-0012	10 sheets Use this non-woven sheet with Cleaner F1

^{*1} These recommended lifetimes are for 80 g/m² (20 lb) A4 sized documents. Therefore, appropriate replacement lifetimes may vary for other document types. ^{*}We recommend the use of our genuine products for the consumables. Failures, trouble, and damage of this product resulting from the use of consumables other than our genuine products are subject to repair fees even within the warranty period.

ScanSnap iX1500 System Requirements

●Windows

Operating systems		Windows 10 (32-bit / 64-bit) ^{*1} Windows 8.1 (32-bit / 64-bit) ^{*1}	Windows 7 (32-bit / 64-bit)
Hardware requirements ^{*2}	CPU ^{*3}	Intel® Celeron 1.8 GHz (2core) or higher (Recommended: Intel® Core™ i5 2.5 GHz or higher)	
	Memory capacity ^{*3}	2 GB or more (Recommended: 4 GB or more)	
	Display resolution	1,024 x 768 pixels or more	
	Disk capacity ^{*4}	3.8 GB or more of free hard disk space	

^{*1} Operate Windows in desktop mode. ^{*2} The ScanSnap device may not work if the connected computer does not meet these requirements. ^{*3} Scanning speeds may drop if the recommended CPU, memory capacity and USB 1.1 requirements are not met. ^{*4} Microsoft .NET Framework 4.7 will be installed (requires 4.5 GB of disk space) together with ScanSnap Home for systems that do not have .NET Framework 4.7 installed. ^{*}Please refer to the ScanSnap website for the latest support information of the driver and applications. Compatibility may differ depending on the software's version. ^{*}The system requirements may change depending on the duration of support and the support policy of the companies that make the software.

●Mac

Operating systems		macOS v10.14 macOS v10.13 macOS v10.12 ^{*1}
Hardware requirements ^{*2}	CPU ^{*3}	Intel® Core i5 1.4 GHz or higher (Recommended: Core i5 2.5 GHz or higher)
	Memory capacity ^{*3}	2 GB or more (Recommended: 8 GB or more)
	Display resolution	1,024 x 768 pixels or more
	Disk capacity	2.0 GB or more of free hard disk space

^{*1} macOS v10.12.4 or later is required. ^{*2} The ScanSnap device may not work if the connected computer does not meet these requirements. ^{*3} Scanning speeds may drop if the recommended CPU, memory capacity and USB 1.1 requirements are not met. ^{*}Please refer to the ScanSnap website for the latest support information of the driver and applications. Compatibility may differ depending on the software's version ^{*}The system requirements may change depending on the duration of support and the support policy of the companies that make the software.

●Software

Windows	Mac
ScanSnap Home ^{*1}	
Nuance Power PDF Standard ^{*2}	Nuance PDF Converter for Mac ^{*2}
ABBYY FineReader for ScanSnap™	

^{*1} ScanSnap Home installation requires a computer and Internet. Activation is also necessary for software use. Please visit the company website for download information. <http://scansnap.fujitsu.com/g-support/en> ^{*2} Please refer to the included license certificate to download the software.

Accessories

●ScanSnap	●Welcome Guide	●Safety Precautions	●AC Cable	●AC Adapter	●USB Cable	●Receipt Guide
-----------	----------------	---------------------	-----------	-------------	------------	----------------

This scanner is designed to digitize materials that can be reproduced lawfully, in accordance with applicable copyright regulations and other laws. ScanSnap users are responsible for how they use this scanner. It is imperative that ScanSnap users comply with all applicable local rules and laws, including, without limitation, copyright laws when using this scanner.

^{*}ABBYY™ FineReader™ Engine © ABBYY. OCR by ABBYY. ABBYY and FineReader are trademarks of ABBYY Software, Ltd. which may be registered in some jurisdictions. Intel, Pentium, and Intel Core are trademarks or registered trademarks of Intel Corporation or its subsidiaries in the U.S. and/or other countries. "ISIS" is a trademark of Open Text. ^{*}Mac, macOS, and the Mac logo are trademarks of Apple Inc. ^{*}ScanSnap, the ScanSnap logo and ScanSnap Home are registered trademarks or trademarks of PFU Limited in Japan. ^{*}Other company names and product names are the trademarks or registered trademarks of the respective companies.

ABBYY® FineReader®



PFU Limited, a Fujitsu company, has determined that this product meets the ENERGY STAR® guidelines for energy efficiency. ENERGY STAR® is a registered trademark of the United States.



Capture today.
Advance tomorrow.



ScanSnap iX1500

For more ScanSnap related information, visit our website at : <http://scansnap.fujitsu.com/>

Safety Precautions	Be sure to carefully read all safety precautions prior to using this product and use this device as instructed.	Do not place this device in wet, moist, steamy, dusty or oily areas. Using this product under such conditions may result in electrical shock, fire or damage to this product.
---------------------------	---	---

Specifications are subject to change without notice.

©2018 PFU Limited Printed in some country 2018.9 U-207 SZX 50S

INTUITIVE SCANNING AT YOUR FINGERTIPS

All your documents in one place



Refined and advanced software for total document management

ScanSnap iX1500's all-new ScanSnap Home combines all your favorite functions into one interface. Easily manage, edit, and utilize scanned data from documents, receipts, business cards, photos and more all in one application. Documents are automatically recognized and grouped according to document type (receipts, photographs, business cards etc.).

Name files faster

ScanSnap Home uses the text, such as shop and company names, found on your scanned documents to recommend file names. Not only does accuracy of information extraction increase the more you scan, but edits made to file names are learned for later naming suggestions.

Find files easily

ScanSnap Home offers simple yet powerful functions to organize and search all of your document types using folders, tags, and keywords. Now you can find information easier than ever before.

Documents

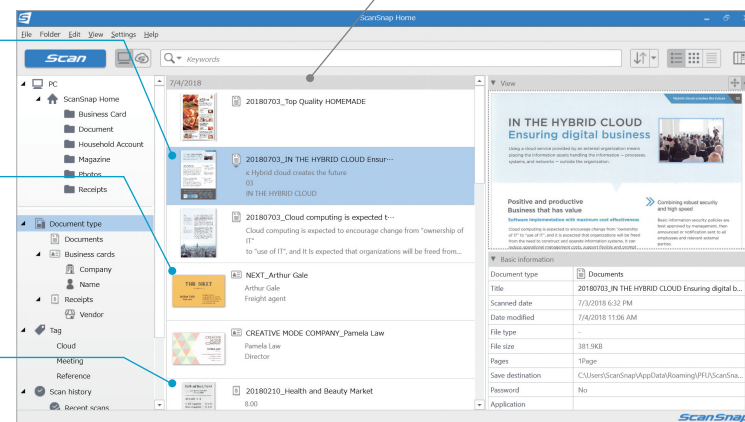
Quickly find that recipe or meeting agenda that you stored last week with easy access tags.

Business Cards

ScanSnap Home's intelligent auto correction makes managing business card contacts a simple and seamless process with less manual work for you. Contact whoever you need right away with the software organizing captured data according to company name and much more.

Receipts

Keep track of your spending habits each month so that you can check back whenever you desire.



Simple stress-free scanning

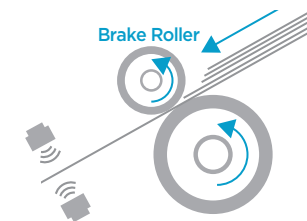
Create files quickly

Simply open the document chute and ScanSnap is ready to go. Scan single and double sided documents with ease at a speedy 30 sheets per minute.

*Image quality: "Best mode" (color / grayscale at 300dpi; B&W at 600dpi)

Versatile paper handling

With professional grade feeding technology and ultrasonic sensors, ScanSnap handles multi-page documents with ease and can additionally detect and alert the user of multi-feeding errors.



Scan any document

Scan documents larger than the typical A4 size that need to be folded in half, envelopes and much more with Manual Scan Mode. Documents that are difficult to scan in Normal Scan Mode can now be captured without any issues.

Receipts and business cards are no longer a hassle

Effortlessly scan small documents with the all new Receipt Guide. No need to be concerned about fixing receipts and business cards that tend to curl or skew. Designed to be a comfortable fit even when the cover is closed, it dramatically reduces the handling of documents before hitting the scan button.



Scan large volumes with ease

Scan large volumes of various types of documents from color photos to double-sided landscape documents with a host of intelligent automatic image processing functions. Together, these features enable you to scan confidently without adjusting any settings.

Automatic Color Detection



Automatic Size Detection



De-Skew



Automatic Rotation



Blank Page Removal



Enhanced usability and functionality

ScanSnap's first 4.3 inch touch screen interface

The iX1500 comes equipped with a user-friendly touch screen, providing an easy to use interface with simple icons and an intuitive user experience.

Time saving maintenance notifications

Receive notifications on the touch screen and from ScanSnap Home whenever Dust Detection spots dust that may result in streaked images. Maintenance notification beforehand enables you to reduce the hassle of time-consuming rescans.

Share your ScanSnap for everyone to use

The iX1500 comes with software*1 licenses*2 for multiple accounts, enabling shared use of a single unit with family members and company colleagues.

*1 The ScanSnap iX1500 comes with multiple licenses: 4 for ScanSnap Home, 4 for ABBYY FineReader for ScanSnap™, and 1 for Nuance (Win/Mac).

*2 Additional licenses may be purchased for ScanSnap Home.



Perfect for your needs

Scan anywhere you want whenever you want

Connect the iX1500 to your computer or smart device.*1 (both iOS and Android) at home and in your office, using existing Wi-Fi environments with Access Point Connect Mode. Connecting is also possible in environments without Wi-Fi using Direct Connect Mode, as the scanner itself functions as an access point.

*1 When using smart devices, ScanSnap Connect Application is required.

Access Point Connect Mode



Direct Connect Mode

