

Unique ultra-slim
design and
effortless scanning

DR-C225/DR-C225W

Ultra compact desktop scanner/
Wi-Fi enabled scanner

you can



imageFORMULA

Canon

Small, speedy and style-conscious scanners



Scanning made easier with the super-compact and intelligent imageFORMULA DR-C225/DR-C225W – ideal for small office and counter-top environments. The DR-C225W's built-in Wi-Fi allows wireless scanning from mobile, tablet and PC devices.



B&W SPEED



COLOUR SPEED



DAILY DUTY CYCLE



AUTOMATIC DOCUMENT FEEDER

	B&W SPEED	COLOUR SPEED	DAILY DUTY CYCLE	AUTOMATIC DOCUMENT FEEDER
DR-C225	25ppm	25ppm	1,500 scans/day	30 sheets
DR-C225W (Wi-Fi)*	25ppm	25ppm	1,500 scans/day	30 sheets

* Scanning speeds may vary dependent on the Wi-Fi network/speeds quoted based on Access Point/Station Mode via Wireless Connection Setup Tool

Slim profile, unique design

With its innovative and space-saving vertical J-Path design the DR-C225/W sets the standard for ultra-compact desktop scanners.

The vertical J-Path design allows documents to be fed and received vertically, so no extra desk space is required. Side-mounted cables and ports let you place both devices directly against a rear wall, or even on a shelf, for the ultimate in space-saving convenience.



Unique vertical J-Path design

Boosting your productivity

To reduce delays and keep production levels high the DR-C225/W offers easy 'one-touch' scanning. Pressing the scanner's start button boots up your CaptureOnTouch software application and gets you ready to scan in seconds. Canon takes innovation forward with the scanner's intuitive natural feeding concept. This allows users to feed documents into the scanner face up, in their natural orientation.

Fast, high quality scanning

The DR-C225 delivers impressive double-sided scanning speeds, while the DR-C225W with Wi-Fi offers greater productivity for scanning documents directly to smart devices. Equipped with a CMOS CIS (Contact Image Sensor) unit; high quality images can be produced allowing better text readability for enhanced OCR (Optical Character Recognition) accuracy.

Extremely versatile and reliable

The DR-C225/W can handle a varied mix of document types. By switching the paper feeding to straight-through path you can scan A3 sized documents (in folio mode), thick documents, embossed cards and 3 metre long documents with ease.

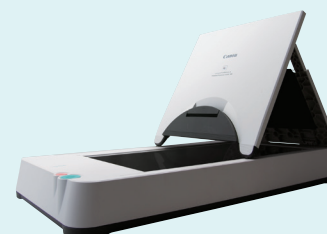
The reliable ultrasonic Double Feed Detection feature accurately detects when more than one sheet is fed simultaneously, which can prevent important information from being lost or missed.

Simple, intuitive scanning

The DR-C225/W have been designed to encourage easy scanning with an array of intuitive features. The Full Auto Mode feature (when using CaptureOnTouch software) automatically applies the best settings for key document parameters – including text orientation, page size detection, colour, resolution and skip blank page, saving you time and effort.

Handle exceptions with optional flatbed

Scan bound books, journals and fragile media by adding the Flatbed Scanner Unit 101 for documents up to A4 or Flatbed Scanner Unit 201 for A3 scanning. Connected by USB, these flatbed scanners work seamlessly with the DR-C225 (only) in a smooth dual-scanning operation that lets you apply the same image-enhancement features to any scan.



A4 Flatbed Scanner Unit 101



A3 Flatbed Scanner unit 201

Introducing the DR-C225W – with built-in Wi-Fi technology, it is the perfect device for scanning wirelessly from mobile, tablet and PC devices.

Scan with Wi-Fi to Mobile, PC and to the Cloud



DR-C225W

The DR-C225W with built-in Wi-Fi technology delivers an enhanced customer experience with efficient batch-capture of information to mobile/smart devices. Businesses can also share the DR-C225W wirelessly, amongst office departments by downloading the Canon Wireless Connection Setup Tool/Network Monitor to enable wireless scanning from your PC.

CaptureOnTouch Mobile App

Scan direct to your iPhone®, iPad® and Android device with the free CaptureOnTouch mobile App. It comes with advanced image processing tools such as automatic size detection, deskew and skip blank page – giving consistently superior image quality results.

Download the free CaptureOnTouch mobile App from Google Play (Android user) and Apple App Store (iOS user).



Powerful software built for integration and performance

The DR-C225/W are hybrid scanners which accommodate both Mac and Windows users. They are bundled with a great range of desktop software to boost your productivity.

CaptureOnTouch

Intuitive capture software that makes it quick and simple to achieve premium quality results. CaptureOnTouch incorporates an icon-based user interface with scanning to multiple file formats including PDF, PDF-A, TIFF, JPEG, BMP, PPTX and PNG. CaptureOnTouch can also send captured information directly to data management systems and cloud-based applications (compatible with both Windows and Mac).



A powerful, easy-to-use desktop application that creates, edits and converts PDFs enabling collaboration like never before (compatible with Windows only).

OmniPage

Convert original paper documents into editable electronic files using OCR (compatible with Windows only).

PaperPort

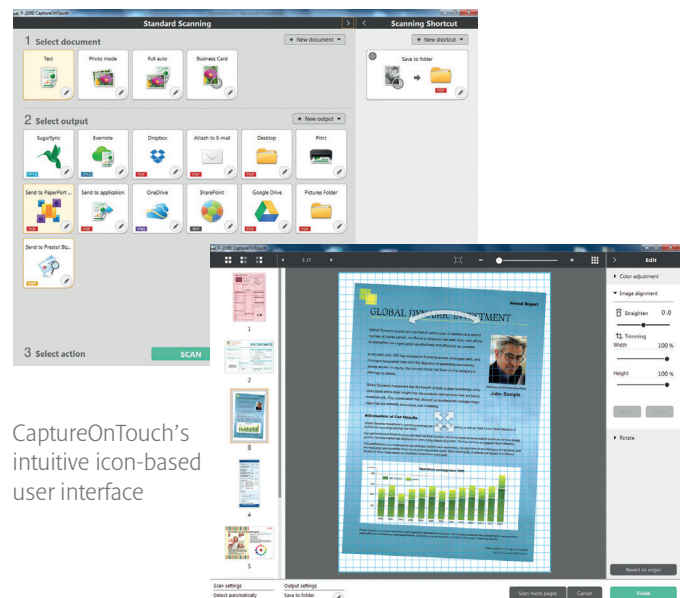
This file management application is renowned for its intuitive and user-friendly graphic user interface, making it easy to store, organise and retrieve your digital documents (compatible with Windows only).

Presto! PageManager

A simple but powerful filing software for Mac users that enables you to store, organise and edit your digital documents (compatible with Mac only).

Presto! BizCard

Scan business cards to convert and organise important information into a searchable database (compatible with both Windows and Mac).



CaptureOnTouch's intuitive icon-based user interface

Specifications: imageFORMULA DR-C225/DR-C225W

Type Document Reading Sensor Optical Resolution Light Source Reading Side Interface	Desktop Type Sheet Fed Scanner CMOS CIS 1 Line Sensor 600dpi RGB LED Front / Back / Duplex High Speed USB 2.0 IEEE802.11 b/g/n	
Dimensions	Tray Closed: 300 (W) x 156 (D) x 220 (H)mm Tray Opened: 300 (W) x 235 (D) x 339 (H)mm Approx: 2.7kg (DR-C225W: 2.8kg)	
Weight Power Requirements Power Consumption	AC100 – 240V (50 / 60Hz) Scanning: 12.8W or less, Sleep Mode: 1.9W or less, Power Turned Off: 0.5W or less (DR-C225) Scanning: 15.1W or less, Sleep Mode: 4.1W or less, Power Turned Off: 0.3W or less (DR-C225W)	
Operating Environment Environmental Compliance	10 – 32.5°C (50 – 90.5°F), Humidity: 20 – 80% RH RoHS and ENERGY STAR	
READING SPEED ¹ (A4, Portrait, 200dpi) B&W Greyscale Colour	DR-C225/DR-C225W USB Connection	DR-C225W (AP/ST – Wi-Fi Mode)
	25ppm / 50ipm	25ppm / 50ipm
	25ppm / 50ipm	25ppm / 50ipm
DOCUMENT SPECIFICATIONS	J-Path	Straight Through
	Width	50.8 – 216mm
	Length	70 – 356mm
	Thickness	0.06 – 0.15mm (52 – 128g/m ²)
	Long Document	Up to 3000mm (Selectable in MS Windows Control Panel)
	Card Scanning	53.9 x 85.5 x 0.76mm (Embossed card scanning is supported)
Folio Mode Business Card	216 x 297mm (Max) Width: 49mm – 55mm Length: 85mm – 91mm	
Paper Separation Feeder Capacity	Retard Roller Method (Reversing Separator Roller) 30 sheets (80g/m ²)	
OUTPUT Resolution Mode	150 x 150dpi, 200 x 200dpi, 300 x 300dpi, 400 x 400dpi, 600 x 600dpi Black & White, Error Diffusion, Advanced Text Enhancement I, Advanced Text Enhancement II (Advanced Text Enhancement I not available with Mac driver), 8-Bit Greyscale: (256-Level), 24-Bit Colour, Auto Colour Detection	

WI-FI DATA RATE	IEEE802.11b: Max: 11Mbps IEEE802.11g: Max: 54Mbps IEEE802.11n: Max: 300Mbps
WI-FI SECURITY	Authentication Mode: Open, Shared, WPA (PSK), WPA2 (PSK) Encryption Protocol: WEP (64/128), TKIP/AES
SPECIAL FEATURES	Automatic Page Size Detection, Deskew, 3-Dimensional Colour Correction (partially by driver), Colour Dropout (RGB), Colour Enhancement (Red), Auto Colour Detection, Text Enhancement, MultiStream, Preset Gamma Curve, Scan Panel, Prescan, Character Emphasis, Erase Shadow, Image Rotation, Skip Blank Page, Select Scanning Document Side, Folio, Scan Area Setting, Text Orientation Recognition, Background Smoothing, Shadow Removal (On / Off), Rapid Recovery Scan, Double Feed Detection (Ultrasonic Sensor / By Length), Full Auto Mode
BUNDLED SOFTWARE For Windows OS	ISIS / TWAIN Driver (Windows XP Pro / XP Home / VISTA / 7 / 8) CaptureOnTouch ² Wireless Connection Setup Tool / Network Monitor (DR-C225W) Nuance eCopy PDF Pro Office Nuance PaperPort Presto! BizCard Reader Plug-in: Microsoft SharePoint®, Evernote, Google Drive™, Dropbox, OneDrive, SugarSync
For Mac OS	TWAIN Driver CaptureOnTouch ² Wireless Connection Setup Tool / Network Monitor (DR-C225W) Nuance eCopy PDF Pro Office Presto! PageManager Presto! BizCard Reader Plug-in: Microsoft SharePoint®, Evernote, Google Drive™, Dropbox, SugarSync
Options	A4 Flatbed 101 ³ A3 Flatbed 201 ³ Silex C-6600GB – Scan and Print Server ³ Silex SX-DS-4000U2 – USB Device Server ³
Consumables Suggested Daily Duty Cycle	Exchange Roller Kit 1500 scans/day

¹ Scanning speeds depend on the specification of PC and the settings of function.

² Software Developer Kits are available through the Canon Business Solutions Developer Programme – www.canon.europe.com/bsd

³ These options are only available for the DR-C225.

Specifications for imageFORMULA Flatbed Unit 101 and Flatbed Unit 201

	Optional Flatbed Scanner Unit 101	Optional Flatbed Scanner Unit 201
Type Document Reading Sensor Optical Resolution Light Source Interface Dimensions Weight Power Requirements Power Consumption Environmental Compliance	Universal A4 Flatbed Option 1200dpi 290 (W) x 512 (D) x 88.5 (H)mm 3.5kg (without AC adaptor) AC220 – 240V (50 / 60Hz) Scanning: <15.2W, Sleep Mode: <5.1W Power off: <0.5W RoHS and ENERGY STAR	Universal A3 Flatbed Option 600dpi 571 (W) x 436 (D) x 96 (H)mm 8.5kg (without AC adaptor) AC100 – 240V (50 / 60Hz) Scanning: <21W, Sleep Mode: <3.1W Power off: <0.3W
READING SPEED ¹ B&W / Greyscale (200 / 300dpi) Colour (200dpi) Colour (300dpi)	3 Seconds 3 Seconds 4 Seconds	3.5 Seconds (A3) 4.5 Seconds (A3) 4.5 Seconds (A3)
DOCUMENT SPECIFICATION Width Length	up to 215.9mm up to 355.6mm	up to 297.4mm up to 421.8mm
OUTPUT Resolution Mode	100 x 100dpi, 150 x 150dpi, 200 x 200dpi, 240 x 240dpi, 300 x 300dpi, 400 x 400dpi, 600 x 600dpi, 1200 x 1200dpi Black and White, Error Diffusion, Advanced Text Enhancement II, 8-bit Greyscale (256-level), 24-bit Colour, Auto Colour Detection	100 x 100dpi, 150 x 150dpi, 200 x 200dpi, 240 x 240dpi, 300 x 300dpi, 400 x 400dpi, 600 x 600dpi
SPECIAL FEATURES	Automatic Page Size Detection, Deskew, Ambient Light Cancelling Mode, Scan Area Setting. Additional features inherited from DR-Scanners	

¹ Scanning speeds depend on the specification of PC and the settings of function.

Some images are simulated for clarity of reproduction. All data is based on Canon's standard testing methods. This leaflet and the specifications of the product have been developed prior to the date of product launch. Final specifications are subject to change without notice.™ and ®: all company and / or product names are trademarks and / or registered trademarks of their respective manufacturers in their market and / or countries.



eCopy® PDF
Pro Office

PaperPort OmniPage

Presto! PageManager



Canon Electronics Inc
canon.com

Canon Europe
canon-europe.com

English Edition
© Canon Europa N.V., 2014

Canon Europe Ltd
3 The Square
Stockley Park
Uxbridge
Middlesex
UB11 1ET
United Kingdom

